



# MONTHLY MEMBERSHIP PROGRESS REPORT

District 14 F

Results as of: 04/30/2019

GMT: CINDY GREGG

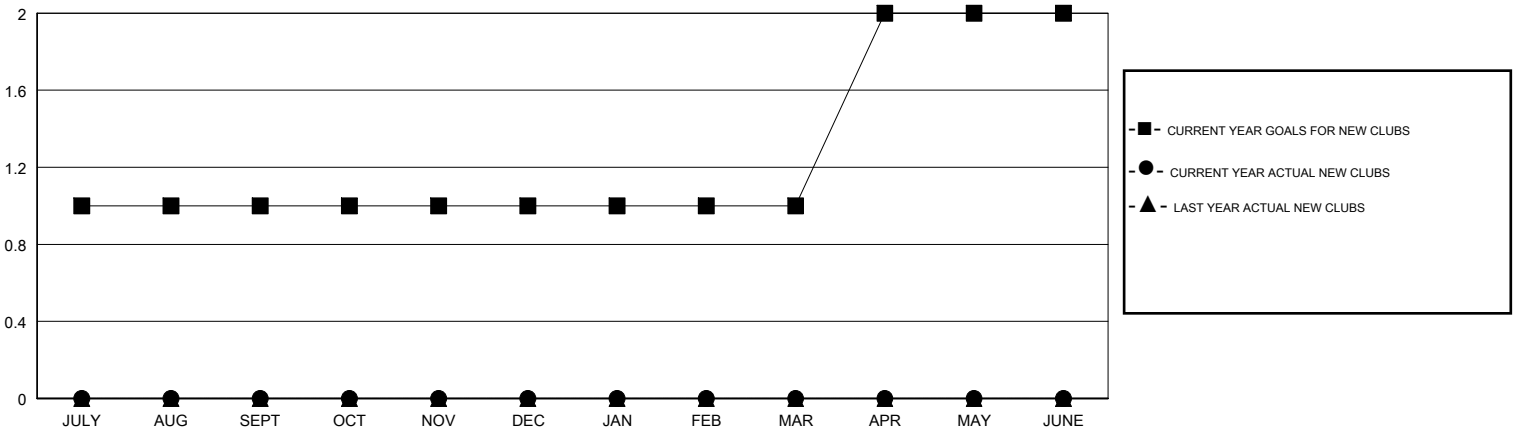
LOCATION PENNSYLVANIA

GMT CA

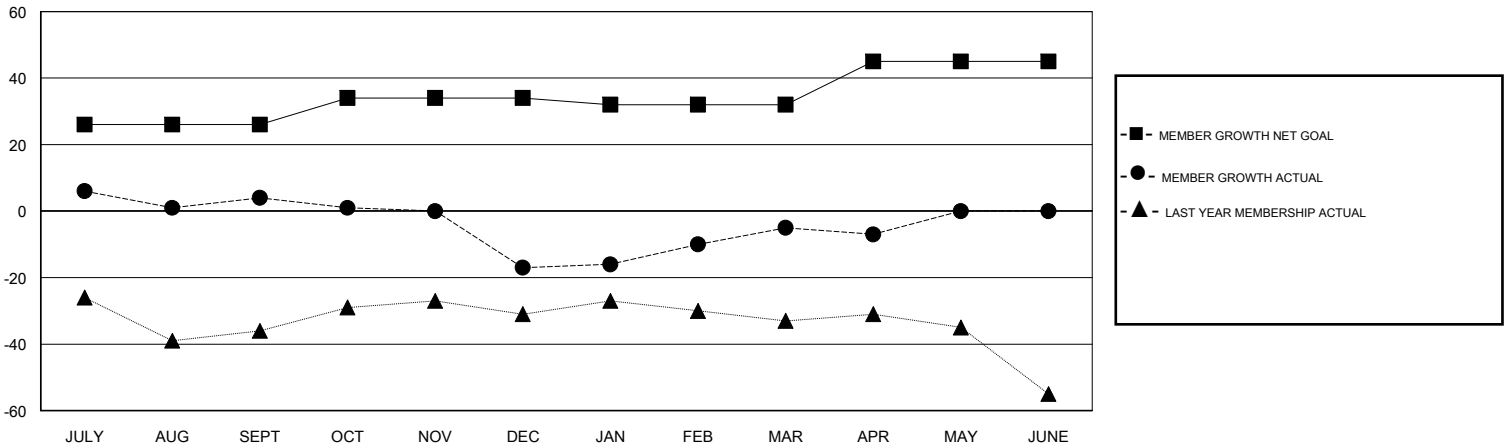
Clubs			
RESULTS FOR 2018-2019			
QUARTER	NEW CLUB GOAL	NEW CLUBS	DROPPED CLUBS
JULY/AUG/SEPT	1	0	0
OCT/NOV/DEC	0	0	0
JAN/FEB/MAR	0	0	0
APR/MAY/JUNE	1	0	0

Members			
RESULTS FOR 2018-2019			
QUARTER	MEMBER GROWTH NET GOAL	MEMBER GROWTH ACTUAL	DROPPED MEMBERS ACTUAL (including transfers)
JULY/AUG/SEPT	26	17	13
OCT/NOV/DEC	8	29	50
JAN/FEB/MAR	-2	20	8
APR/MAY/JUNE	13	12	9

GOALS AND ACTUAL NEW CLUBS CUMULATIVE



GOALS AND ACTUAL MEMBERS CUMULATIVE



DROPPED CLUBS: 0	25 CLUBS OF 40 ADDED 1 OR MORE NEW MEMBERS	<u>GENDER DISTRIBUTION</u> MALE 868 (78.69%) FEMALE 235 (21.31%) Women Percentage Fiscal Year Goal: 24%
<u>DROPPED MEMBERS</u> DECEASED 13 CLUB CANCELLED 0 OTHER 67 TOTAL 80	<a href="#">CLICK HERE FOR CUMULATIVE MEMBERSHIP DATA</a>	TOTAL FAMILY UNIT MEMBERS 190 FAMILY MEMBERS PAYING HALF DUES 98